

RUSHEYMEAD HOUSE, PLUMSTEAD HIGH ST, SE18



1 Bed Top Floor Stunner With Parking

- ◆ Purpose Built
- ◆ 1 Double Bedroom
- ◆ Top Floor
- ◆ Communal Grounds
- ◆ Long Lease
- ◆ Allocated Parking
- ◆ Fab Transport Links



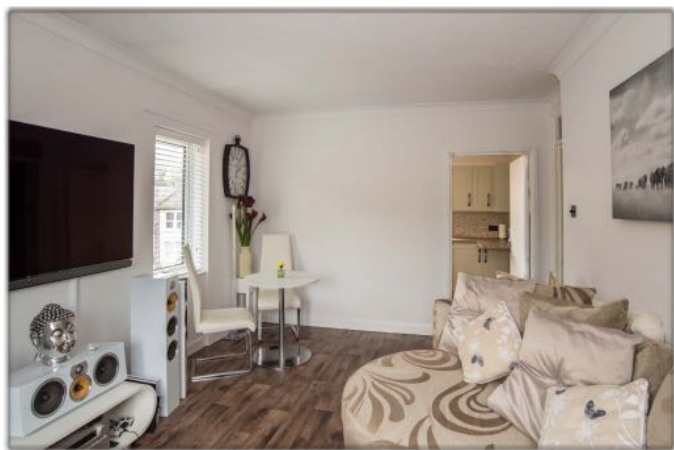
020 7358 1188

warren@warrenkerr.co.uk

www.warrenkerr.co.uk

£249,995

Leasehold

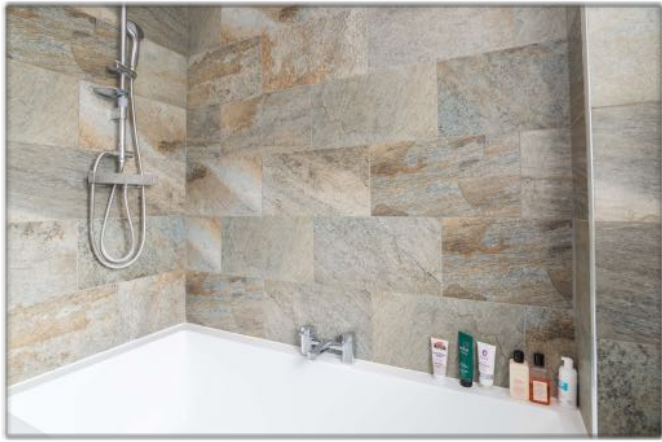
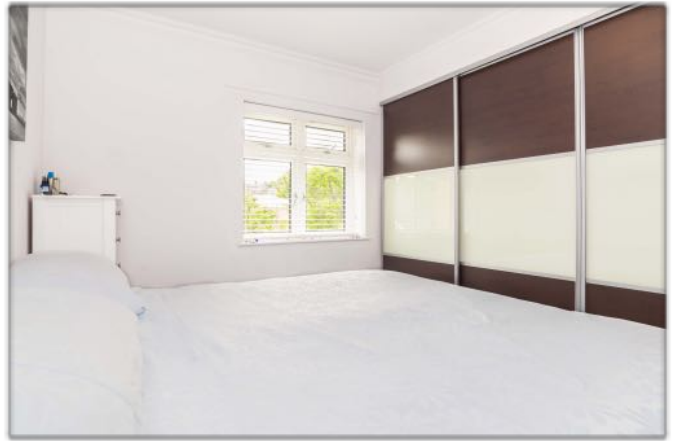


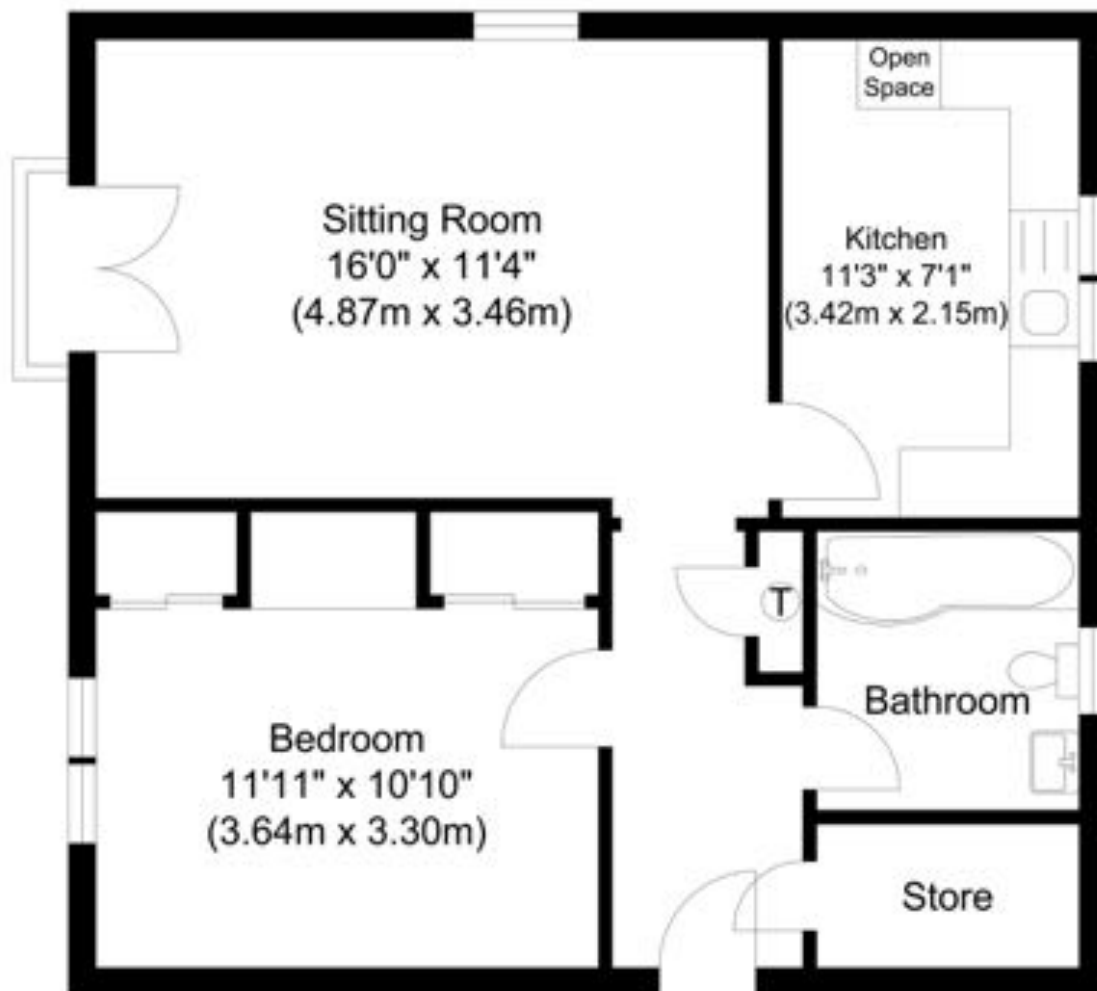
Rushey mead House is a modern, purpose built block of just 6 flats, with leafy communal gardens and allocated private parking. The immaculately kept, bright and cheery communal hallways hint towards a very well managed and cared for building, a theme that continues in abundance as we enter this stunning top floor apartment: You are welcomed into a wide entrance hall with smart contemporary decor, an enormous built in storage cupboard and access to the loft storage - very handy. Straight ahead is the lounge, beautifully bright with double opening doors onto a Juliette balcony overlooking the gardens (perfect for kicking off your shoes and letting in the Summer breeze!), and a further window illuminating the dining space. The flooring is a rich laminate, and contrasts perfectly with the smart neutral decor. Off this is the brand new well fitted kitchen, another very bright space, with neutral units, snappy worktop and natural stone splashbacks. Over the hall from here and you're into a fabulously tranquil double bedroom with contemporary full width fitted wardrobes. Plenty of room for your King or Queen size bed in here! Last up is the newly fitted bathroom: A stylish blend of crisp, white modern suite, chrome towel rad and luxurious riven slate tiling. There's a thermostatic shower over the bath with a 'rain' head that looks like it could deliver a tropical downpour!

Let's talk about the tenure. The lease has 159 years remaining, and there's a monthly service charge of approx. £101, and the residents have built up a maintenance fund of around £20,000 for any sudden emergencies or future works (nothing planned as yet).

Rushey mead house is perfectly placed to take advantage of the Crossrail next year via new stations at Woolwich and Abbey Wood, putting Liverpool St 14 or 18 mins away respectively, so now is a great time to invest.

Plenty of local shops and convenience stores on the high street and Lakedale Rd, and it's fair to say the property is surrounded by Green space with St Nicholas Gardens just over the road, and Winn's Common & Bostall Heath nearby.





Total Gross Internal Area
515.05 sq. ft.
(47.85 sq. m)

Rushey Mead House

Illustration for identification purposes only, measurements are approximate, not to scale.